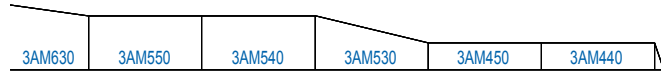
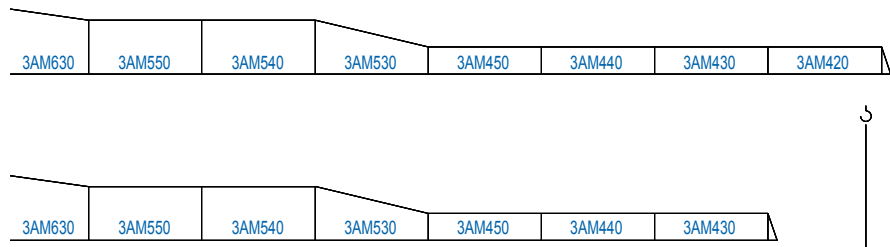
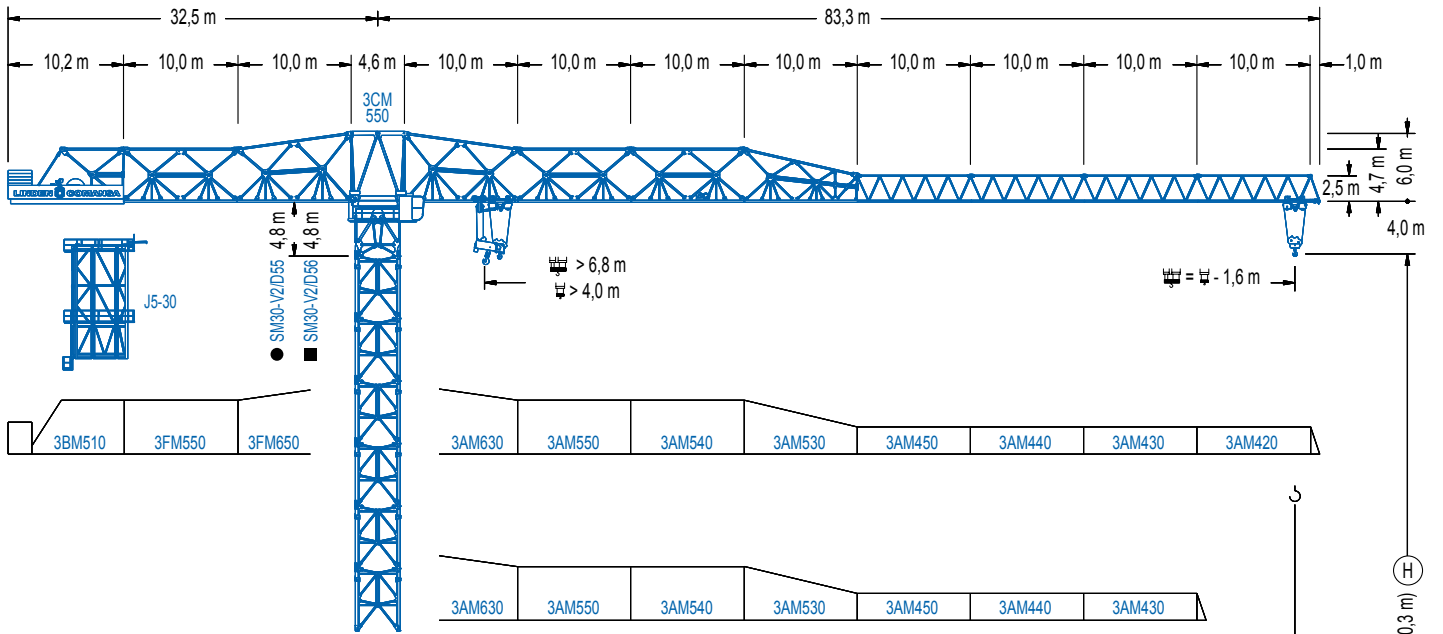


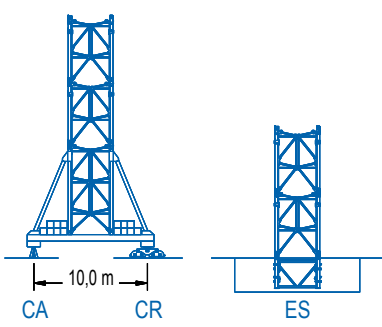
LC 3000

30 LC 1100

48 t



| R | 40 | 50 | 60 | 70 | 80 | m |
|----|-------|-------|-------|-------|-------|---|
| kg | 30000 | 22500 | 16500 | 15000 | 11000 | |
| kg | 33000 | 24750 | 18150 | 16000 | 12100 | |



LC 3000

DIAGRAMA DE CARGAS

Load chart / Diagramme de charges / Lastdiagramm / Diagramma di carico / Диаграмма распределения нагрузки

| R (m) | | | | | | | | | | | | | | | | | | | | |
|-------|-------|-------|-------|-------|-------|-------|-------|-------|-------|-------|-------|-------|-------|-------|-------|-------|-------|-------|-------|----|
| 80 | 20,9 | 25 | 28 | 30 | 32 | 35 | 37 | 40 | 45 | 47 | 48 | 49,5 | 57,8 | 65 | 68 | 70 | 75 | 78 | 80,0 | m |
| | 48000 | 38510 | 33480 | 30730 | 28340 | 25300 | 23560 | 21300 | 18220 | 17180 | 16700 | 16000 | 16000 | 14000 | 13290 | 12850 | 11860 | 11330 | 11000 | kg |
| 70 | 23,4 | 25 | 28 | 30 | 32 | 35 | 37 | 40 | 45 | 47 | 50 | 55 | 55,8 | 66,1 | 68 | 70,0 | m | | | |
| | 48000 | 44320 | 38630 | 35500 | 32800 | 29350 | 27380 | 24820 | 21340 | 20160 | 18580 | 16340 | 16000 | 16000 | 15500 | 15000 | kg | | | |
| 60 | 25,0 | 28 | 30 | 32 | 35 | 37 | 40 | 45 | 47 | 50 | 55 | 58,4 | m | | | | | | | |
| | 47890 | 41780 | 38440 | 35540 | 31840 | 29730 | 26980 | 23250 | 21980 | 20290 | 17890 | 16500 | kg | | | | | | | |
| 50 | 26,1 | 28 | 30 | 32 | 35 | 37 | 40 | 45 | 47 | 48,4 | m | | | | | | | | | |
| | 48000 | 44160 | 40640 | 37600 | 33720 | 31500 | 28610 | 24680 | 23360 | 22500 | kg | | | | | | | | | |
| 40 | 26,1 | 28 | 30 | 32 | 35 | 37 | 38,4 | m | | | | | | | | | | | | |
| | 48000 | 44030 | 40530 | 37490 | 33620 | 31400 | 30000 | kg | | | | | | | | | | | | |

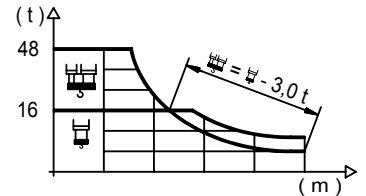
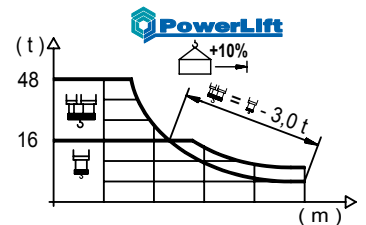


DIAGRAMA DE CARGAS POWERLIFT

Load chart PowerLift / Diagramme de charges PowerLift / Lastdiagramm PowerLift / Diagramma di carico PowerLift / Диаграмма распределения нагрузки PowerLift

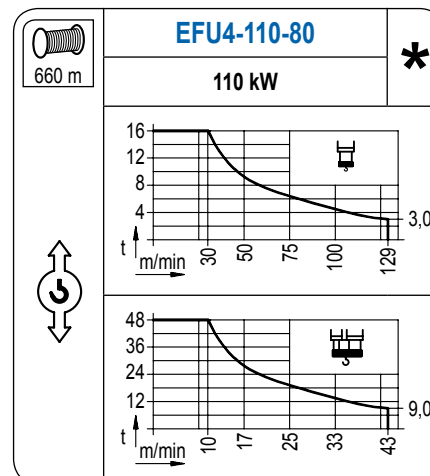
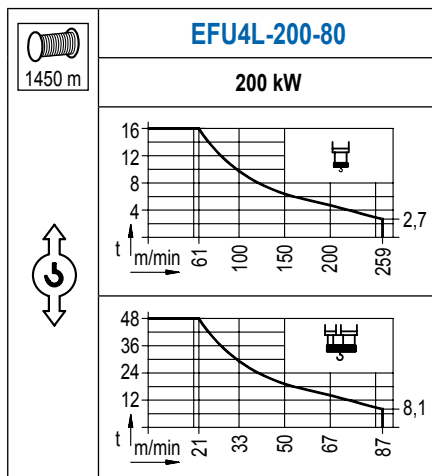
| R (m) | | | | | | | | | | | | | | | | | | | | |
|-------|-------|-------|-------|-------|-------|-------|-------|-------|-------|-------|-------|-------|-------|-------|-------|-------|-------|-------|-------|----|
| 80 | 22,0 | 25 | 28 | 30 | 32 | 35 | 38 | 40 | 45 | 47 | 50 | 52 | 52,4 | 62,7 | 65 | 70 | 75 | 78 | 80,0 | m |
| | 48000 | 41160 | 35830 | 32910 | 30380 | 27150 | 24460 | 22900 | 19640 | 18540 | 17060 | 16170 | 16000 | 16000 | 15360 | 14120 | 13040 | 12460 | 12100 | kg |
| 70 | 24,9 | 28 | 30 | 32 | 35 | 38 | 40 | 45 | 47 | 50 | 52 | 55 | 58 | 59,6 | 70,0 | m | | | | |
| | 48000 | 41680 | 38350 | 35450 | 31770 | 28690 | 26910 | 23190 | 21930 | 20240 | 19220 | 17840 | 16610 | 16000 | 16000 | kg | | | | |
| 60 | 26,7 | 28 | 30 | 32 | 35 | 38 | 40 | 45 | 47 | 50 | 52 | 55 | 58,4 | m | | | | | | |
| | 48000 | 45360 | 41760 | 38630 | 34660 | 31350 | 29430 | 25410 | 24050 | 22230 | 21130 | 19640 | 18150 | kg | | | | | | |
| 50 | 28,1 | 30 | 32 | 35 | 38 | 40 | 45 | 47 | 48,4 | m | | | | | | | | | | |
| | 48000 | 44370 | 41070 | 36880 | 33380 | 31350 | 27110 | 25680 | 24750 | kg | | | | | | | | | | |
| 40 | 28,1 | 30 | 32 | 35 | 38 | 38,4 | m | | | | | | | | | | | | | |
| | 48000 | 44420 | 41130 | 36920 | 33420 | 33000 | kg | | | | | | | | | | | | | |



LC 3000

MECANISMOS

Mechanisms / Mécanismes / Antriebe / Meccanismi / Механизмы



MECANISMOS

Mechanisms / Mécanismes / Antriebe / Meccanismi / Механизмы

| | |
|--------------|---------------|
| | CFU-18 |
| | 18 kW |
| 0 ⇔ 90 m/min | |

| | |
|-------------|-----------------|
| | GFU-15 |
| | 4x 15 kW |
| 0 ⇔ 0,7 rpm | |

| | |
|----------|------------------|
| | TRA-10 |
| | 4x 100 Nm |
| 20 m/min | |
| 10XR65-A | 10CR85 |

| | |
|----------|------------------|
| | TRA-10VC |
| | 4x 100 Nm |
| 20 m/min | |
| 10XR65-A | 10CR85 |

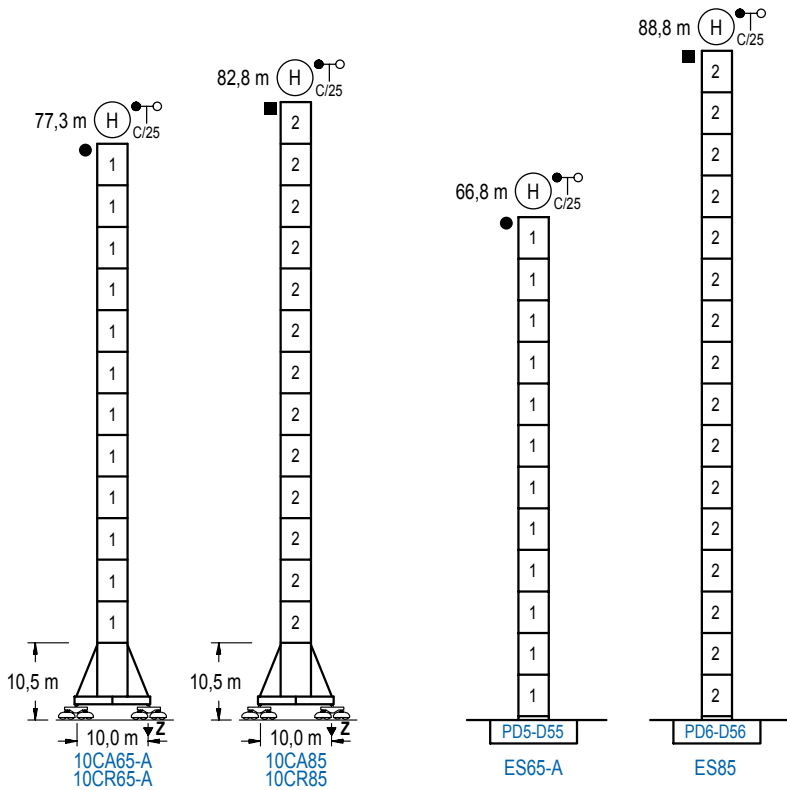
| POTENCIA / POWER / PUISSANCE / LEISTUNG / POTENZA / МОЩНОСТЬ | | | | Tensión de alimentación / Operating voltage / Tension de service / Betriebsspannung / Tensione di alimentazione / Напряжение источника питания | Generador / Generator / Générateur / Generator / Generatore / Генератор |
|--|--|--|---|--|---|
| Elevación / Hoist / Levage / Hub / Sollevamento / Тип механизма (подъем) | Carro / Trolley / Chariot / Laufkatze / Carrolo / Грузовая тележка | Giro / Slewing / Rotation / Drehbewegung / Rotazione / Поворот | Traslación / Travel / Translation / Verfahrbewegung / Traslazione / Ход | | |
| EFU4L-200-80 | CFU-18 | (4x) GFU-15 | (4x) TRA-10 | 400 V | 475 kVA |
| EFU4-110-60 | | | | 3ph 50 Hz | 330 kVA |

| |
|--|
| Opcional / Optional / En option / Kaufoption / Opzionale / Опционально |
| * |

ALTURAS BAJO GANCHO

Heights under hook / Hauteurs sous crochet / Hakenhöhen / Altezza sotto gancio / Высота под крюком

∅ 4,0 m

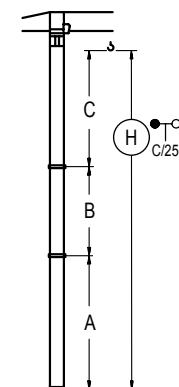


| n° | Ref. | ∅ | h |
|----|------|-----|-----|
| 1 | D55 | 4,0 | 5,5 |
| 2 | D56 | 4,0 | 5,5 |

| Z máx. | En servicio / In operation / En service / In Betrieb / In servizio / При работе | 10CR65-A...227 t 10CR85231 t |
|--------|--|---------------------------------------|
| | Fuera de servicio / Out of service / Hors service / Ausser Betrieb / Fuori servizio / В стационарном состоянии | 10CR65-A...212 t 10CR85310 t |

GRÚA ARRIOSTRADA

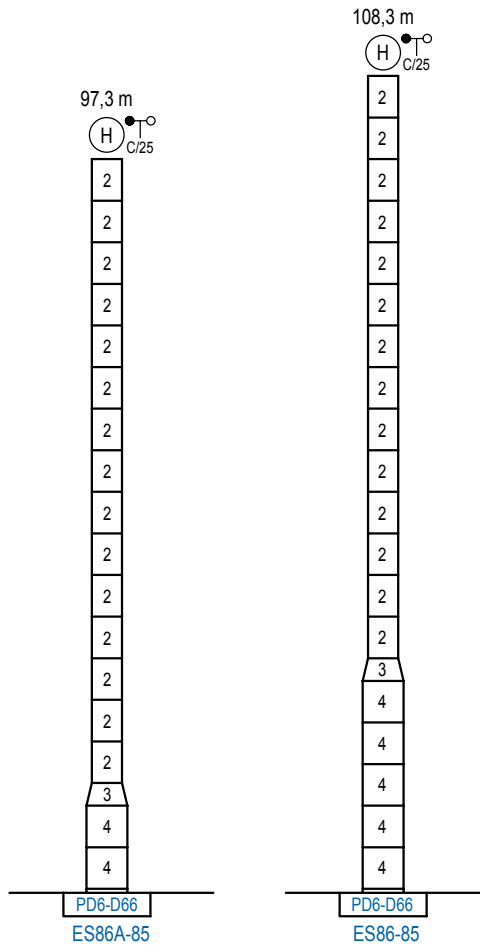
Braced crane / Grue à entretoisement / Abgespannter Kran / Gru ancorata / Нарастиваемый кран



| | 10CA65-A | 10CA85 |
|-------|----------|--------|
| A max | 60,0 | 65,5 |
| A min | 32,5 | 32,5 |
| B max | 33,0 | 49,5 |
| B min | 22,0 | 22,0 |
| C max | 50,3 | 66,8 |
| H max | 110,8 | 181,8 |

| | ES65-A | ES85 |
|-------|--------|-------|
| A max | 49,5 | 71,5 |
| A min | 22,0 | 33,0 |
| B max | 33,0 | 49,5 |
| B min | 22,0 | 22,0 |
| C max | 50,3 | 66,8 |
| H max | 99,8 | 187,8 |

Otras zonas de viento o alturas superiores consultar / Other wind zones or additional hook heights on request / Autres zones de vent ou des hauteurs supplémentaires sur demande / Andere Windzonen oder weitere Hakenhöhen auf Anfrage / Per zone con velocità del vento particolari o altezze superiori consultare il fabbricante / При других ветренных зонах о при большой высоте проконсультируйтесь с нами



| | n° | Ref. | ∅ | h | n° | Ref. | ∅ | h |
|--|----|------|-----|-----|-----|------|---------|-----|
| | | 2 | D56 | 4,0 | 5,5 | 3 | TD66D56 | 5,4 |
| | | | | | 4 | D66 | 5,4 | 5,5 |

Otras zonas de viento o alturas superiores consultar / Other wind zones or additional hook heights on request / Autres zones de vent ou des hauteurs supplémentaires sur demande / Andere Windzonen oder weitere Hakenhöhen auf Anfrage / Per zone con velocità del vento particolari o altezze superiori consultare il fabbricante / При других ветренных зонах о при большой высоте проконсультируйтесь с нами

LC 3000



Construcciones Metálicas COMANSA S. A.

Tel.: (+34) 948 335 020 / Fax: (+34) 948 330 810 / E-mail: info@comansa.com
 Polígono Urbizkain, C/ta. Aoiz N°1 31620 Huarte (Navarra)- SPAIN

| |
|---|
| |
| DS.1539.02 09/15 30 LC 1100/48 t |

Reserva de modificaciones. Subject to modifications. Modifications réservées. Konstruktionsänderungen vorbehalten. Il Fabbricante si riserva la facoltà di apportare modifiche. Возможны изменения.