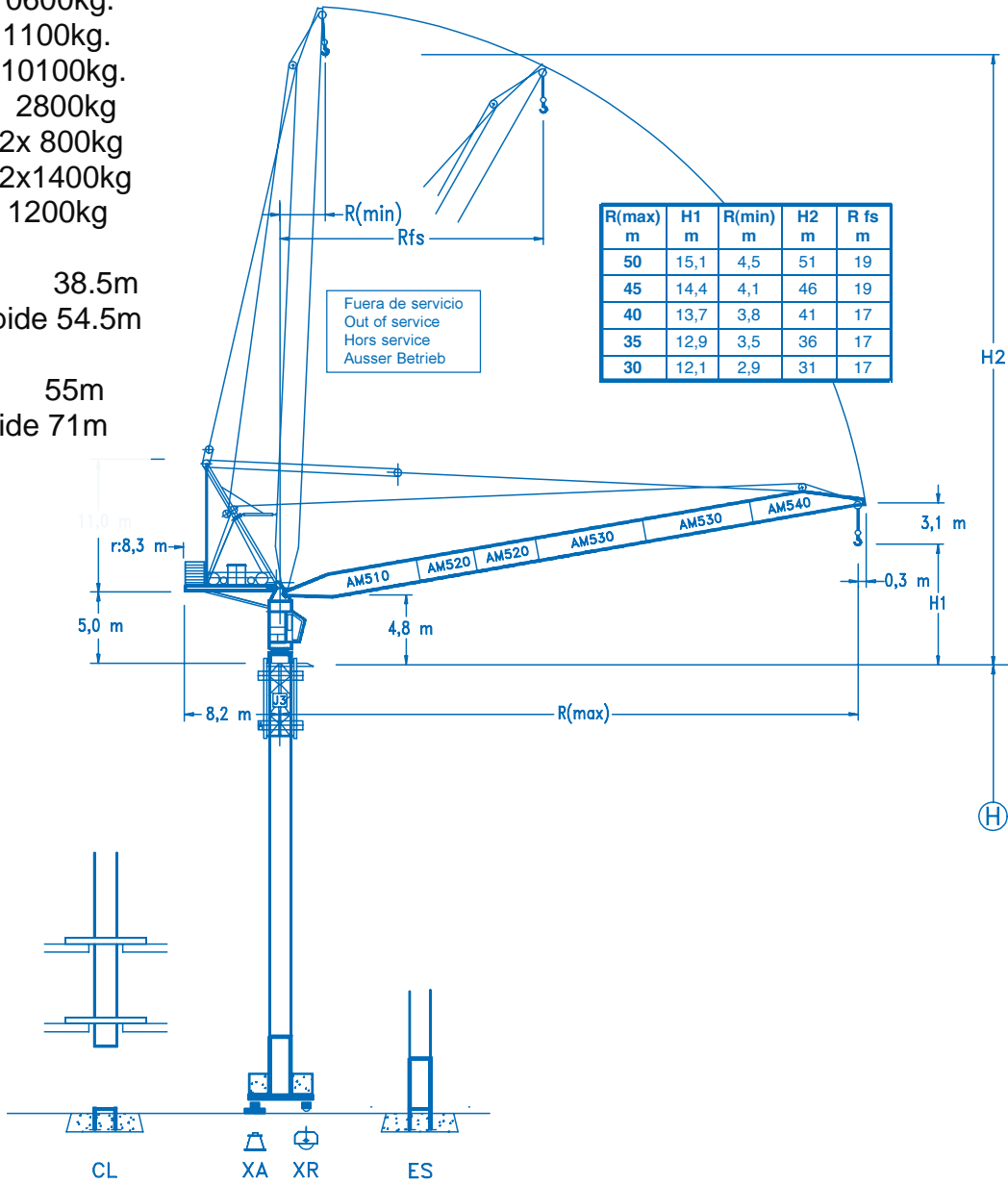




- *SM/S25 10600kg.
- Plat/ Cab. 1100kg.
- Contrapluma 10100kg.
- AM 510 2800kg
- AM 520 2x 800kg
- AM 530 2x1400kg
- AM 540 1200kg
- Montaje:
- Altura torre 38.5m
- Altura +SM+Cuspide 54.5m
- Desmontaje:
- Altura torre: 55m
- Altura+SM+Cuspide 71m



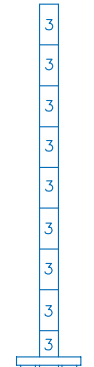
CE
DIN 15018 H1 B3

R														
50	20,6 12000	22 10980	25 8940	27 8010	30 6910	32,1 6000	35 5290	37 4900	40 4390	42 4100	45 3720	47 3490	50 3000	m kg
45	20,0 12000	22 10620	25 8880	27 8070	30 7080	32,9 6000	35 5540	37 5170	40 4680	42 4390	45 4000	m kg		
40	21,2 12000	22 11440	25 9750	27 8700	30 7630	32 7040	34,9 6000	37 5550	40 5000	m kg				
35	20,5 12000	22 11150	25 9750	27 8830	30 7900	32 7370	35 6700	m kg						
30	21,1 12000	22 11510	25 10130	27 9380	30 8300	m kg								

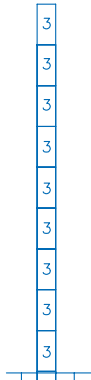
H	R
m	m
51,4	30
45,9	35/40
40,4	45/50

H	R
m	m
49,6	30
44,1	35/40
38,6	45/50

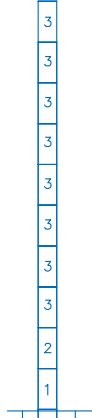
H	R
m	m
55,1	30
49,6	35/40
44,1	45/50



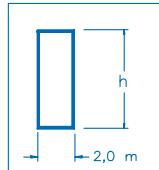
5XA72
5XR72



ES72



ES42

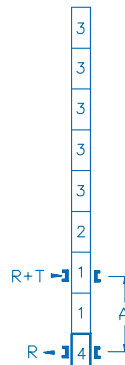


N Ref.	h
1 D23A	5,5 m
2 TD23A	5,5 m
3 S25	5,5 m
4 CLD23A	3,1 m

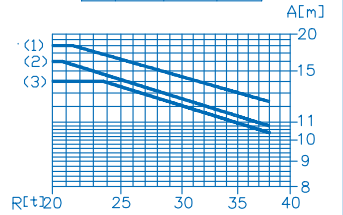
VER./CL

H	R
m	m
47,2	30/35/40
41,7	45/50

	H [m]	P [t]	T [t]
(1)	47,2	102,8	17,0
(2)	41,7	99,5	16,0
(3)	36,2	96,2	15,5



CL42



R. máx.	En servicio	5XR72 111,5t
	In operation	
	En service	
	In Betrieb	

R. máx.	Fuera de servicio	5XR72 156,5t
	Out of service	
	Hors service	
	Ausser Betrieb	

AFU-45

45 kW

2 min

GR-10

2 x 100 Nm

0 ⇄ 0,7 rpm

TRA-7.5

2 x 75 Nm

0 ⇄ 20 m/min

TRA-7.5VC

2 x 75 Nm

0 ⇄ 20 m/min

EFU4-45-30

545 m

45 kW

EFU4-65-30

790 m

65 kW

Tensión de alimentación	400 V
Operating voltage	3 ph
Tension de service	50 Hz
Betriebsspannung	

Opcional	*
Optional	
En option	
Kaufoption	



Construcciones Metálicas COMANSA S. A.

Tel.: (34) 948 335 020
Fax: (34) 948 330 810
e-mail: info@comansa.com
www.comansa.com

Polígono Urbizkain
E-31620 HUARTE-PAMPLONA.- SPAIN

DS.0346.34	09/05	LCL-200 12 t
-------------------	-------	---------------------