

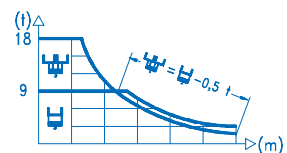
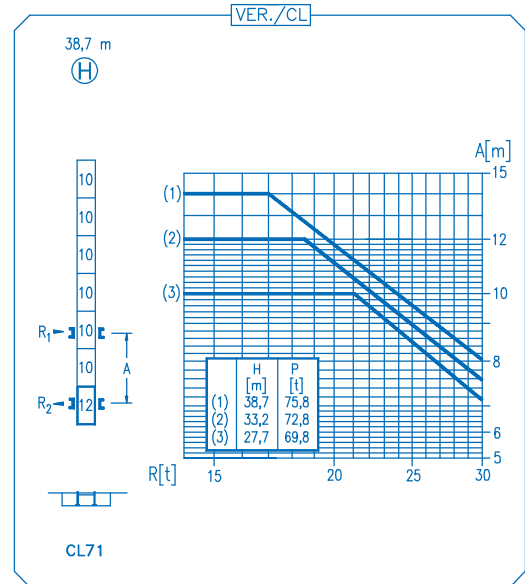
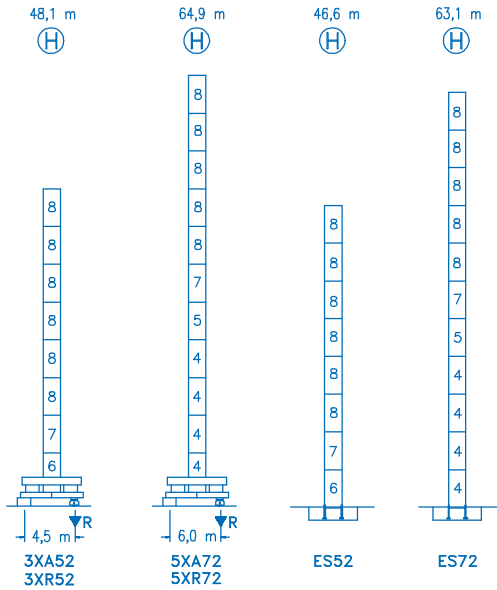


**CE**  
DIN 15018 H1 B3

R														
64	11,7	15	21,0	21,1	25	30	34	40	44	50	54	60	64	m
	18000	13455	9000	9000	7460	6075	5270	4375	3920	3370	3075	2705	2500	kg
60	11,9	15	21,5	21,7	25	30	34	40	44	50	54	60	m	
	18000	13760	9000	9000	7690	6265	5440	4520	4045	3485	3180	2800	kg	
54	11,9	15	21,4	21,8	25	30	34	40	44	50	54	m		
	18000	13710	9000	9000	7735	6305	5475	4545	4070	3505	3200	kg		
50	13,1	15	20	23,6	24,4	30	34	40	44	50	m			
	18000	15330	10940	9000	9000	7140	6205	5165	4635	4000	kg			
44	13,6	15	20	24,5	25,6	30	34	40	44	m				
	18000	15995	11430	9000	9000	7535	6555	5460	4900	kg				
40	13,6	15	20	24,5	25,7	30	34	40	m					
	18000	16005	11440	9000	9000	7590	6600	5500	kg					
34	13,4	15	20	24,3	25,7	30	34	m						
	18000	15840	11315	9000	9000	7585	6600	kg						
30	13,4	15	20	24,1	25,8	30	m							
	18000	15745	11245	9000	9000	7600	kg							





<b>R. máx.</b>	En servicio In operation En service In Betrieb	3XR52 ..... 90,1 t
		5XR72 ..... 95,7 t

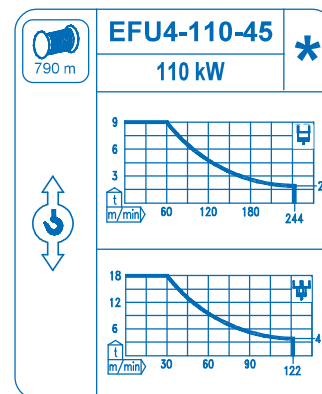
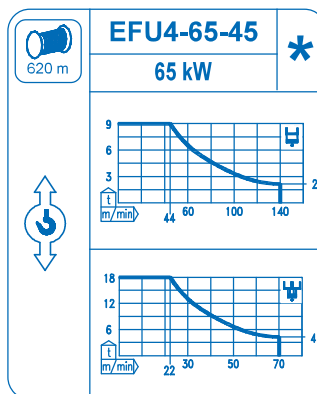
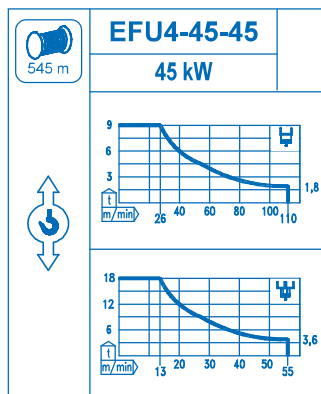
<b>R. máx.</b>	Fuera de servicio Out of service Hors service Ausser Betrieb	3XR52 ..... 94,4 t
		5XR72 ..... 134,0 t

**CFU-7.5**  
7,5 kW  
0 ⌀ 94 m/min

**GR-12**  
2 x 120 Nm  
0 ⌀ 0,7 rpm

**TRA-7.5**  
2 x 75 Nm  
0 ⌀ 20 m/min

**TRA-7.5VC**  
2 x 75 Nm  
0 ⌀ 20 m/min  
5XR72



Tensión de alimentación Operating voltage Tension de service Betriebsspannung	400 V 3 ph 50 Hz
--	------------------------

Opcional Optional En option Kaufoption	*
---	---