

| R (max) m | H1 m | R (min) m | H2 m | Rfs m |
|--------------|---------|--------------|---------|----------|
| 60 | 20,7 | 5,7 | 66,3 | 24 |
| 55 | 19,5 | 5,0 | 61,3 | 22 |
| 50 | 18,3 | 5,2 | 56,1 | 20 |
| 45 | 17,1 | 4,3 | 51,1 | 19 |
| 40 | 15,9 | 4,1 | 46,0 | 19 |
| 35 | 14,7 | 4,1 | 40,9 | 19 |
| 30 | 10,7 | 3,3 | 34,8 | 19 |

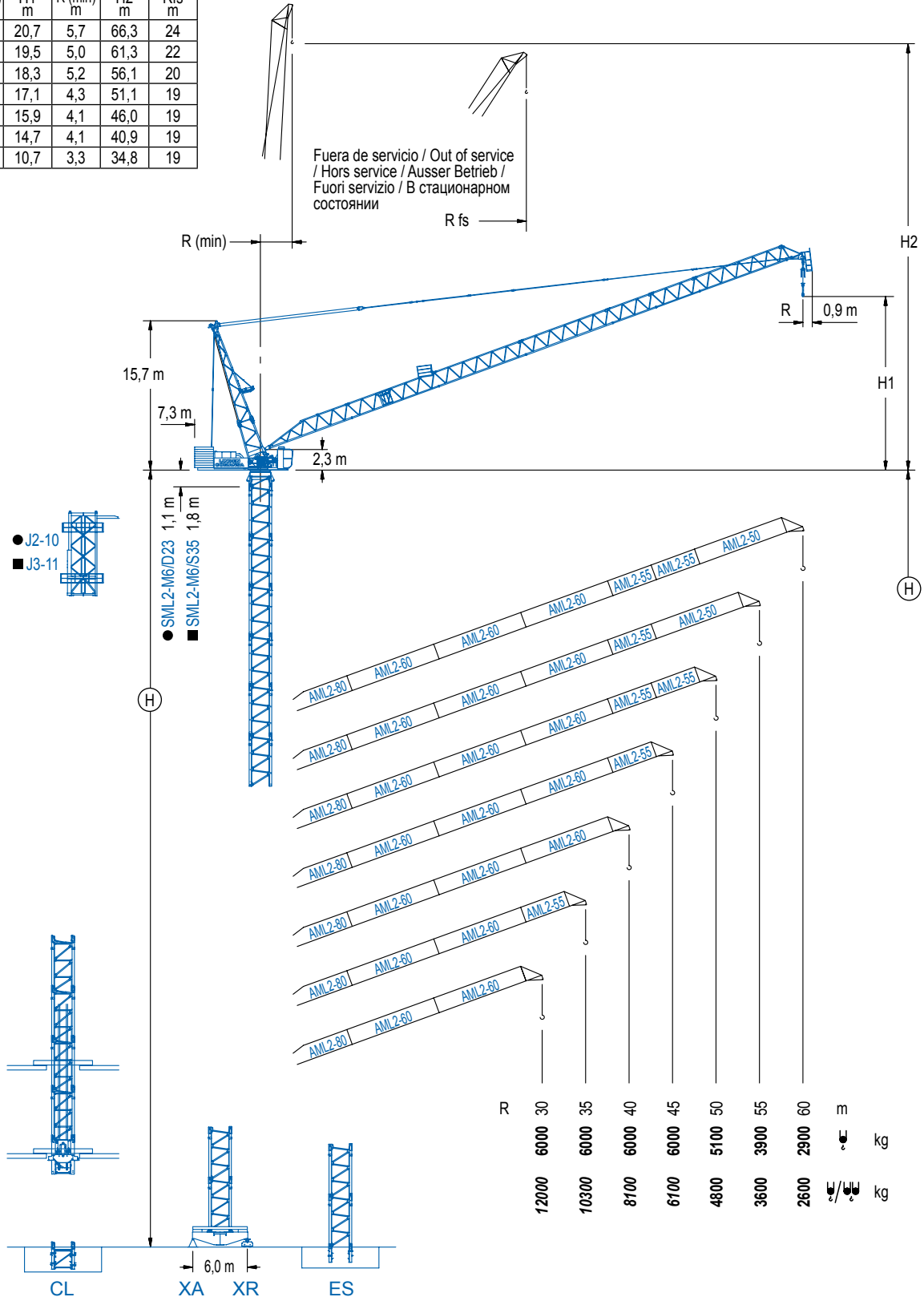
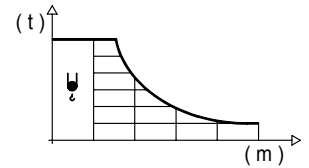


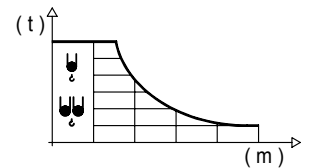
DIAGRAMA DE CARGAS

Load chart / Diagramme de charges / Lastdiagramm / Diagramma di carico / Диаграмма распределения нагрузки

| R (m) | ψ | RCmax (m) | 15 | 20 | 25 | 30 | 35 | 40 | 45 | 50 | 55 | 60 | ↔(m) ↓(kg) |
|-------|---|-----------|----|----|----|------|------|------|------|------|------|------|---------------|
| 60 | | 41,3 | | | | | | 6000 | 5100 | 4190 | 3480 | 2900 | |
| 55 | | 43,1 | | | | | | 6000 | 5580 | 4650 | 3900 | | |
| 50 | | 44,8 | | | | | | 6000 | 5960 | 5100 | | | |
| 45 | | 45,0 | | | | | | | 6000 | | | | |
| 40 | | 40,0 | | | | | | 6000 | | | | | |
| 35 | | 35,0 | | | | | 6000 | | | | | | |
| 30 | | 30,0 | | | | 6000 | | | | | | | |

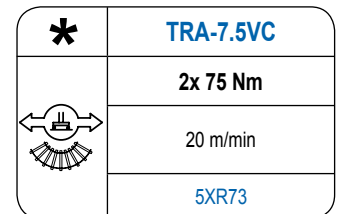
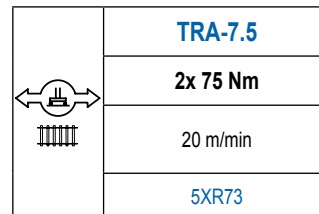
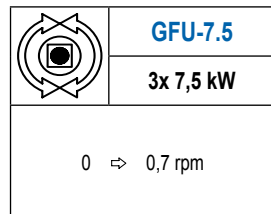
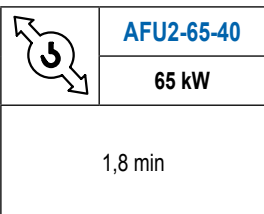
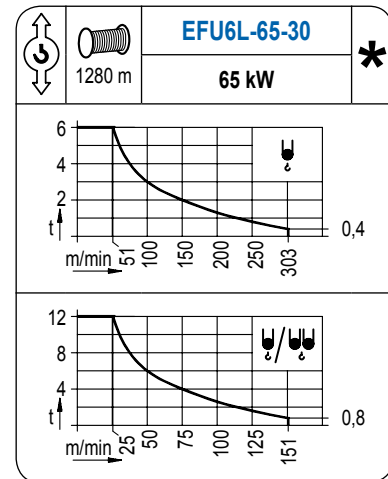
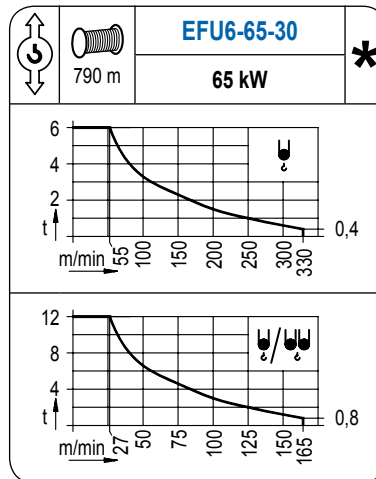
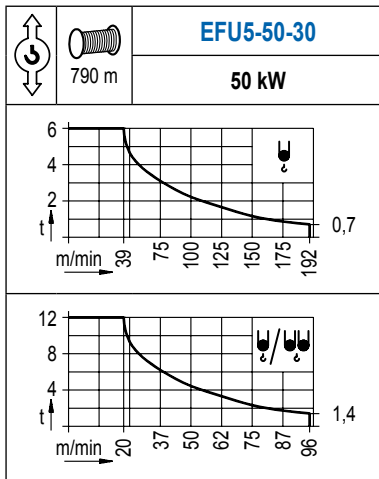


| R (m) | ψ/ψ/ψ | RCmax (m) | 15 | 20 | 25 | 30 | 35 | 40 | 45 | 50 | 55 | 60 | ↔(m) ↓(kg) |
|-------|-------|-----------|----|----|-------|-------|-------|------|------|------|------|------|---------------|
| 60 | | 26,3 | | | 12000 | 9200 | 6900 | 5440 | 4420 | 3670 | 3090 | 2600 | |
| 55 | | 27,2 | | | 12000 | 10070 | 7740 | 6200 | 5110 | 4280 | 3600 | | |
| 50 | | 28,1 | | | 12000 | 10800 | 8470 | 6880 | 5720 | 4800 | | | |
| 45 | | 29,0 | | | 12000 | 11390 | 9020 | 7360 | 6100 | | | | |
| 40 | | 29,9 | | | 12000 | 11950 | 9730 | 8100 | | | | | |
| 35 | | 30,9 | | | | 12000 | 10300 | | | | | | |
| 30 | | 30,0 | | | | | 12000 | | | | | | |



MECANISMOS

Mechanisms / Mécanismes / Antriebe / Meccanismi / Механизмы



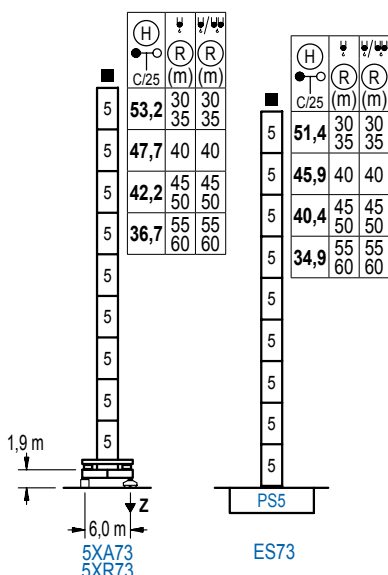
| POTENCIA / POWER / PUISSANCE / LEISTUNG / POTENZA / МОЩНОСТЬ | | | | Tensión de alimentación / Operating voltage / Tension de service / Betriebsspannung / Tensione di alimentazione / Напряжение источника питания | |
|--|--|--|---|--|---------|
| Elevación / Hoist / Levage / Hub / Sollevamento / Тип механизма (подъем) | Abatimiento / Luffing / Releage / Einziehen / Brandeggio / Складывание | Giro / Slewing / Rotation / Drehbewegung / Rotazione / Поворот | Traslación / Travel / Translation / Verfahrbewegung / Traslazione / Ход | Generador / Generator / Générateur / Generator / Generatore / Генератор | 260 kVA |
| EFU5-50-30 | AFU2-65-40 | (3x) GFU-7.5 | (2x) TRA-7.5 | 400 V | 280 kVA |
| EFU6-65-30 | | | | 3ph | 280 kVA |
| EFU6L-65-30 | | | | 50 Hz | 280 kVA |

Opcional / Optional / En option / Kaufoption / Opzionale / Опционально

ALTURAS DE TORRE

Tower height / Hauteurs de tour / Turmhöhen / Altezza della torre / Высота башни

∅ 2,5 m



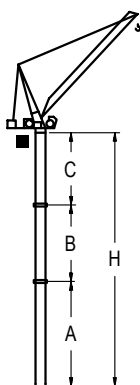
| n° | Ref. | ∅ | h |
|----|------|-----|-----|
| 5 | S35 | 2,5 | 5,5 |

| Z máx. | En servicio / In operation / En service / In Betrieb / In servizio / При работе | 5XR73..... 133 t |
|--------|--|------------------|
| | Fuera de servicio / Out of service / Hors service / Ausser Betrieb / Fuori servizio / В стационарном состоянии | 5XR73..... 166 t |

GRÚA ARRIOSTRADA

Braced crane / Grue à entretoisement / Abgespannter Kran / Gru ancorata / Нарцываемый кран

∅ 2,5 m



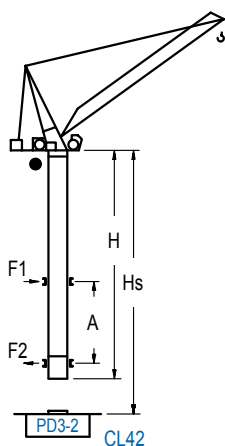
| 5XA73 | | | | | |
|-------|-----|---------|---------|------|---------|
| R | ∅ | 60 / 55 | 50 / 45 | 40 | 35 / 30 |
| (m) | ∅/∅ | 60 / 55 | 50 / 45 | 40 | 35 / 30 |
| A max | | 23,9 | 29,4 | 34,9 | 40,4 |
| A min | | 23,9 | 23,9 | 23,9 | 23,9 |
| B max | | - | 16,5 | - | 22,0 |
| B min | | - | 16,5 | - | 16,5 |
| C max | | 29,3 | 29,3 | 29,3 | 34,8 |
| H max | | 53,2 | 69,7 | 58,7 | 75,2 |

| ES73 | | | | | |
|-------|-----|---------|---------|------|---------|
| R | ∅ | 60 / 55 | 50 / 45 | 40 | 35 / 30 |
| (m) | ∅/∅ | 60 / 55 | 50 / 45 | 40 | 35 / 30 |
| A max | | 22,1 | 27,6 | 33,1 | 38,6 |
| A min | | 22,1 | 22,1 | 22,1 | 22,1 |
| B max | | - | 16,5 | - | 22,0 |
| B min | | - | 16,5 | - | 16,5 |
| C max | | 29,3 | 29,3 | 29,3 | 34,8 |
| H max | | 51,4 | 67,9 | 56,9 | 73,4 |

GRÚA TREPADORA

Internal climbing crane / Grue avec cage de télescope intérieure / Kran mit klettern im Gebäude / Gru in rampante in cavedio / Кран с самоподъемом

∅ 2,0 m



| H C/25 | ∅ | | Hs < 300 m | |
|---------------------------------------|----------|----------|------------|-----------|
| | (R)(m) | (R)(m) | A max (m) | A min (m) |
| 48,5 (4x D23 + 4x D23A + CLD23A-1) | 30 35 | 30 35 | 19,6 | 9,0 |
| 43,0 (3x D23 + 4x D23A + CLD23A-1) | 40 | 40 | 16,8 | 9,0 |
| 37,5 (2x D23 + 4x D23A + CLD23A-1) | 45 50 | 45 50 | 14,1 | 9,0 |
| 32,0 (D23 + 4x D23A + CLD23A-1) | 55 60 | 55 60 | 11,4 | 10,0 |

| n° | Ref. | ∅ | h |
|----|----------|-----|-----|
| 3 | D23 | 2,0 | 5,5 |
| 4 | D23A | 2,0 | 5,5 |
| 14 | CLD23A-1 | 2,0 | 3,4 |

Otras zonas de viento, alturas superiores, arriostramientos o trepado interno consultar / Other wind zones, additional hook heights, tie frames or internal climbing on request / Autres zones de vent, des hauteurs supplémentaires, entretoisements ou grues avec cage de télescope intérieure, sur demande / Andere Windzonen, weitere Hakenhöhen, Abspannungen zum Gebäude oder Klettern im Gebäude auf Anfrage / Per zone con velocità del vento particolari, altezze superiori, ancoraggi o rampante in cavedio, consultare il fabbricante / При других ветренных зонах, при большой высоте, привязках к зданию или наращивании крана внутри здания проконсультируйтесь с нами

LINDEN COMANSA
Construcciones Metálicas COMANSA S. A.

Tel.: (+34) 948 335 020 / Fax: (+34) 948 330 810 / E-mail: info@comansa.com
Polígono Urbizkain, Ctra. Aoiz nº1 31620, Huarte (Navarra), SPAIN

DS.1539.08

02/16

LCL 280/12 t

Reserva de modificaciones. Subject to modifications. Modifications réservées. Konstruktionsänderungen vorbehalten.
Il fabbricante si riserva la facoltà di apportare modifiche. Возможны изменения.

LCL

