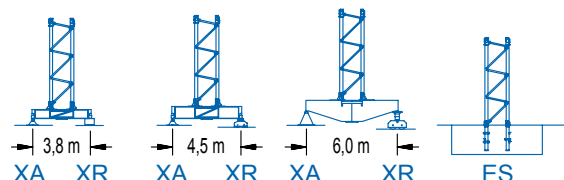
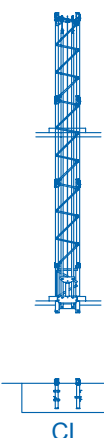


(H = H - 0.2 m)

| R | 4200 | 30,0 | 3850 | 32,5 | 3650 | 35,0 | 3400 | 37,5 | 3150 | 40,0 | 3000 | 42,5 | 2750 | 45,0 | 2350 | 47,5 | 2050 | 50,0 | 2000 | 52,5 | 1920 | 55,0 | 1400 | 57,5 | 1200 | 60,0 |
|----|------|------|------|------|------|------|------|------|------|------|------|------|------|------|------|------|------|------|------|------|------|------|------|------|------|------|
| kg | 4620 | | 4230 | | 4010 | | 3740 | | 3460 | | 3240 | | 2750 | | 2580 | | 2250 | | 2200 | | 1920 | | 1540 | | 1320 | |
| m | | | | | | | | | | | | | | | | | | | | | | | | | | |



LC 1100

DIAGRAMA DE CARGAS

Load chart / Diagramme de charges / Lastdiagramm / Diagramma di carico / Диаграмма распределения нагрузки

| R (m) | | | | | | | | | | | | | | | | | | | | |
|-------|------|------|------|------|------|------|------|------|------|------|------|------|------|------|------|------|------|------|------|----|
| 60,0 | 14,6 | 17 | 20 | 23 | 25,5 | 28,4 | 30 | 32,5 | 35 | 37,5 | 40 | 42,5 | 45 | 47,5 | 50 | 52,5 | 55 | 57,5 | 60,0 | m |
| | 6000 | 4990 | 4090 | 3430 | 3000 | 3000 | 2810 | 2560 | 2350 | 2160 | 2000 | 1860 | 1730 | 1620 | 1520 | 1430 | 1340 | 1270 | 1200 | kg |
| 57,5 | 15,6 | 17 | 20 | 23 | 25 | 27,4 | 30,6 | 32,5 | 35 | 37,5 | 40 | 42,5 | 45 | 47,5 | 50 | 52,5 | 55 | 57,5 | | m |
| | 6000 | 5430 | 4460 | 3760 | 3380 | 3000 | 3000 | 2790 | 2560 | 2360 | 2190 | 2040 | 1900 | 1780 | 1670 | 1570 | 1480 | 1400 | | kg |
| 55,0 | 17,8 | 20 | 23 | 25 | 28 | 30 | 31,2 | 34,9 | 37,5 | 40 | 42,5 | 45 | 47,5 | 50 | 52,5 | 55,0 | | | | m |
| | 6000 | 5210 | 4400 | 3970 | 3450 | 3160 | 3000 | 3000 | 2760 | 2560 | 2390 | 2230 | 2090 | 1970 | 1850 | 1750 | | | | kg |
| 52,5 | 18,8 | 20 | 23 | 25 | 28 | 30 | 32 | 33,2 | 37,2 | 40 | 42,5 | 45 | 47,5 | 50 | 52,5 | | | | | m |
| | 6000 | 5590 | 4730 | 4280 | 3720 | 3410 | 3140 | 3000 | 3000 | 2760 | 2570 | 2400 | 2250 | 2120 | 2000 | | | | | kg |
| 50,0 | 18,3 | 20 | 23 | 25 | 28 | 30 | 32,2 | 36,1 | 37,5 | 40 | 42,5 | 45 | 47,5 | 50,0 | | | | | | m |
| | 6000 | 5410 | 4570 | 4130 | 3590 | 3290 | 3000 | 3000 | 3000 | 2870 | 2670 | 2480 | 2320 | 2180 | 2050 | | | | | kg |
| 47,5 | 19,5 | 23 | 25 | 28 | 30 | 32 | 34,3 | 38,5 | 40 | 42,5 | 45 | 47,5 | | | | | | | | m |
| | 6000 | 4920 | 4450 | 3870 | 3550 | 3280 | 3000 | 3000 | 3000 | 2870 | 2680 | 2500 | 2350 | | | | | | | kg |
| 45,0 | 19,4 | 23 | 25 | 28 | 30 | 32 | 34,2 | 38,4 | 40 | 42,5 | 45,0 | | | | | | | | | m |
| | 6000 | 4910 | 4440 | 3860 | 3540 | 3270 | 3000 | 3000 | 3000 | 2870 | 2670 | 2500 | | | | | | | | kg |
| 42,5 | | 23,5 | 25 | 28 | 30 | 32 | 35 | 37 | 41,5 | 42,5 | | | | | | | | | | m |
| | | 6000 | 5590 | 4880 | 4500 | 4160 | 3720 | 3470 | 3000 | 3000 | | | | | | | | | | kg |
| 40,0 | | 23,3 | 25 | 28 | 30 | 32 | 35 | 37 | 39,6 | | | | | | | | | | | m |
| | | 6000 | 5520 | 4820 | 4440 | 4110 | 3680 | 3430 | 3150 | | | | | | | | | | | kg |
| 37,5 | | 23,2 | 25 | 28 | 30 | 32 | 35 | 37,1 | | | | | | | | | | | | m |
| | | 6000 | 5490 | 4800 | 4410 | 4080 | 3650 | 3400 | | | | | | | | | | | | kg |
| 35,0 | | 22,9 | 25 | 28 | 30 | 32 | 34,6 | | | | | | | | | | | | | m |
| | | 6000 | 5400 | 4720 | 4340 | 4020 | 3650 | | | | | | | | | | | | | kg |
| 32,5 | | 22,2 | 25 | 28 | 30 | 32,1 | | | | | | | | | | | | | | m |
| | | 6000 | 5200 | 4540 | 4180 | 3850 | | | | | | | | | | | | | | kg |
| 30,0 | | 21,9 | 25 | 28 | 29,6 | | | | | | | | | | | | | | | m |
| | | 6000 | 5140 | 4490 | 4200 | | | | | | | | | | | | | | | kg |

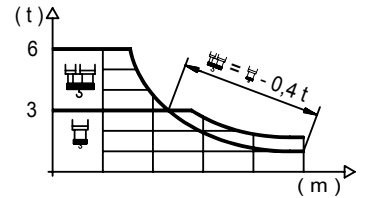
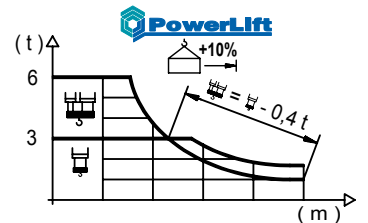


DIAGRAMA DE CARGAS POWERLIFT

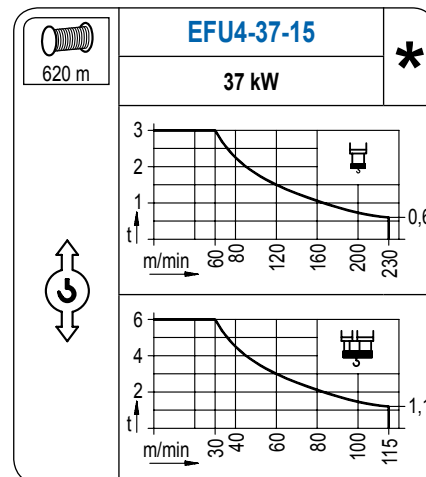
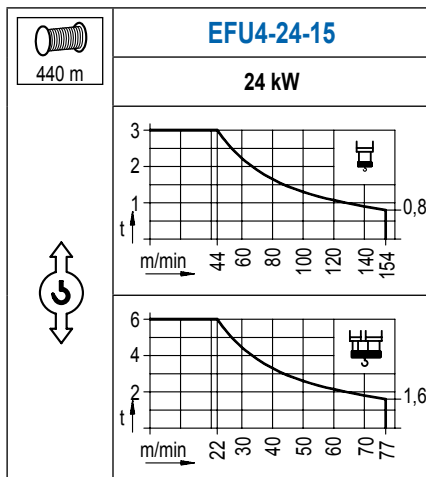
Load chart PowerLift / Diagramme de charges PowerLift / Lastdiagramm PowerLift / Diagramma di carico PowerLift / Диаграмма распределения нагрузки PowerLift

| R (m) | | | | | | | | | | | | | | | | | | | | |
|-------|------|------|------|------|------|------|------|------|------|------|------|------|------|------|------|------|------|------|------|----|
| 60,0 | 15,3 | 18 | 20 | 23 | 25 | 26,8 | 30,5 | 32,5 | 35 | 37,5 | 40 | 42,5 | 45 | 47,5 | 50 | 52,5 | 55 | 57,5 | 60,0 | m |
| | 6000 | 4930 | 4330 | 3640 | 3280 | 3000 | 3000 | 2780 | 2560 | 2360 | 2180 | 2030 | 1890 | 1770 | 1660 | 1560 | 1480 | 1400 | 1320 | kg |
| 57,5 | 16,5 | 18 | 20 | 23 | 25 | 28 | 28,9 | 32,9 | 35 | 37,5 | 40 | 42,5 | 45 | 47,5 | 50 | 52,5 | 55 | 57,5 | | m |
| | 6000 | 5400 | 4760 | 4010 | 3610 | 3130 | 3000 | 3000 | 2800 | 2580 | 2390 | 2230 | 2080 | 1950 | 1830 | 1720 | 1630 | 1540 | | kg |
| 55,0 | 18,8 | 20 | 23 | 25 | 28 | 30 | 32,5 | 33,1 | 37,6 | 40 | 42,5 | 45 | 47,5 | 50 | 52,5 | 55,0 | | | | m |
| | 6000 | 5570 | 4720 | 4260 | 3700 | 3400 | 3070 | 3000 | 3000 | 2800 | 2610 | 2440 | 2290 | 2150 | 2030 | 1920 | | | | kg |
| 52,5 | 20,1 | 23 | 25 | 28 | 30 | 32,5 | 35,3 | 40,2 | 41 | 42,5 | 45 | 47,5 | 50 | 52,5 | | | | | | m |
| | 6000 | 5100 | 4620 | 4020 | 3690 | 3340 | 3000 | 3000 | 2930 | 2820 | 2640 | 2480 | 2330 | 2200 | | | | | | kg |
| 50,0 | 19,6 | 23 | 25 | 28 | 30 | 32,5 | 34,4 | 39,0 | 40 | 42,5 | 45 | 47,5 | 50,0 | | | | | | | m |
| | 6000 | 4950 | 4480 | 3900 | 3580 | 3220 | 3000 | 3000 | 2920 | 2720 | 2550 | 2390 | 2250 | | | | | | | kg |
| 47,5 | 20,8 | 23 | 25 | 28 | 30 | 32,5 | 35 | 36,6 | 41,7 | 42,5 | 45 | 47,5 | | | | | | | | m |
| | 6000 | 5320 | 4820 | 4200 | 3860 | 3490 | 3180 | 3000 | 3000 | 2930 | 2750 | 2580 | | | | | | | | kg |
| 45,0 | 20,8 | 23 | 25 | 28 | 30 | 32,5 | 35 | 36,6 | 41,7 | 42,5 | 45,0 | | | | | | | | | m |
| | 6000 | 5320 | 4820 | 4200 | 3860 | 3500 | 3180 | 3000 | 3000 | 2940 | 2750 | | | | | | | | | kg |
| 42,5 | | 25,3 | 28 | 30 | 32,5 | 35 | 37,5 | 40 | 42,1 | | | | | | | | | | | m |
| | | 6000 | 5330 | 4910 | 4460 | 4080 | 3740 | 3460 | 3240 | | | | | | | | | | | kg |
| 40,0 | | 25,1 | 28 | 30 | 32,5 | 35 | 37,5 | 39,6 | | | | | | | | | | | | m |
| | | 6000 | 5270 | 4860 | 4410 | 4030 | 3700 | 3460 | | | | | | | | | | | | kg |
| 37,5 | | 25,0 | 28 | 30 | 32,5 | 35 | 37,1 | | | | | | | | | | | | | m |
| | | 6000 | 5250 | 4840 | 4400 | 4020 | 3740 | | | | | | | | | | | | | kg |
| 35,0 | | 24,7 | 28 | 30 | 32,5 | 34,6 | | | | | | | | | | | | | | m |
| | | 6000 | 5190 | 4780 | 4340 | 4020 | | | | | | | | | | | | | | kg |
| 32,5 | | 23,9 | 28 | 30 | 32,1 | | | | | | | | | | | | | | | m |
| | | 6000 | 4990 | 4590 | 4230 | | | | | | | | | | | | | | | kg |
| 30,0 | | 23,7 | 28 | 29,6 | | | | | | | | | | | | | | | | m |
| | | 6000 | 4940 | 4620 | | | | | | | | | | | | | | | | kg |



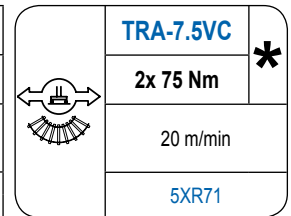
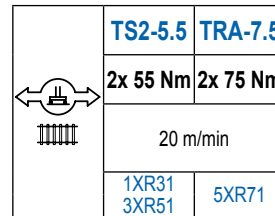
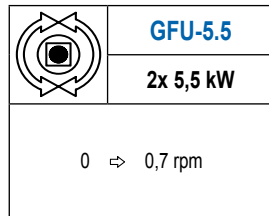
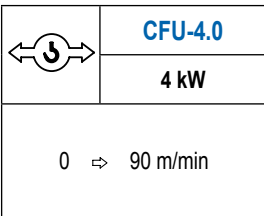
MECANISMOS

Mechanisms / Mécanismes / Antriebe / Meccanismi / Механизмы



MECANISMOS

Mechanisms / Mécanismes / Antriebe / Meccanismi / Механизмы



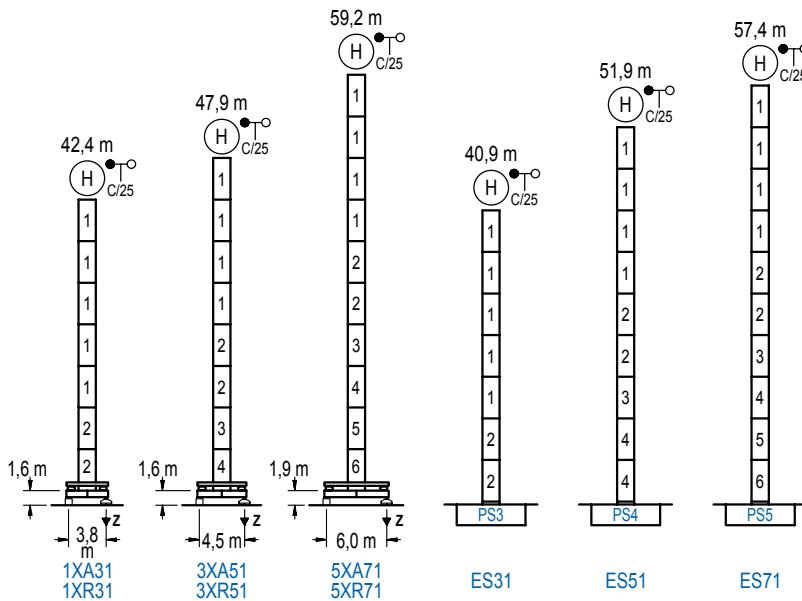
| POTENCIA / POWER / PUISSANCE / LEISTUNG / POTENZA / МОЩНОСТЬ | | | | Tensión de alimentación / Operating voltage / Tension de service / Betriebsspannung / Tensione di alimentazione / Напряжение источника питания | Generador / Generator / Générateur / Generator / Generatore / Генератор |
|--|--|--|---|--|---|
| Elevación / Hoist / Levage / Hub / Sollevamento / Тип механизма (подъем) | Carro / Trolley / Chariot / Laufkatze / Carrelo / Грузовая тележка | Giro / Slewing / Rotation / Drehbewegung / Rotazione / Поворот | Traslación / Travel / Translation / Verfahrbewegung / Traslazione / Ход | 400 V 3ph 50 Hz | 75 kVA 105 kVA |
| EFU4-24-15 | CFU-4.0 | (2x) GFU-5.5 | (2x) TS2-5.5 | 400 V 3ph 50 Hz | 75 kVA |
| EFU4-37-15 | | | (2x) TRA-7.5 | | 105 kVA |

Opcional / Optional / En option / Kaufoption / Opzionale / Опционально
*

ALTURAS BAJO GANCHO

Heights under hook / Hauteurs sous crochet / Hakenhöhen / Altezza sotto gancio / Высота под крюком

∅ 1,6 m

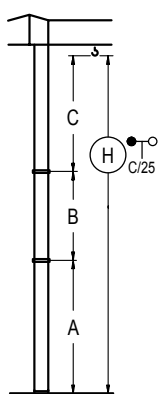


| n° | Ref. | ∅ | h |
|------------------|------|-----|-----|
| 1 | S12 | 1,6 | 5,5 |
| 2 | S13 | 1,6 | 5,5 |
| 3 | TS14 | 1,6 | 5,5 |
| 4 | S14 | 1,6 | 5,5 |
| 5 | TS15 | 1,6 | 5,5 |
| 6 | S15 | 1,6 | 5,5 |
| 1x S13 = 1x S13M | | | |
| 1x S15 = 1x S15M | | | |

| Z máx. | En servicio / In operation / En service / In Betrieb / In servizio / При работе | 1XR31..... 69 t 3XR51..... 66 t 5XR71..... 60 t |
|--------|--|---|
| | Fuera de servicio / Out of service / Hors service / Ausser Betrieb / Fuori servizio / В стационарном состоянии | 1XR31..... 84 t 3XR51..... 92 t 5XR71..... 90 t |

GRÚA ARRIOSTRADA

Braced crane / Grue à entretoisement / Abgespannter Kran / Gru ancorata / Нарастиваемый кран



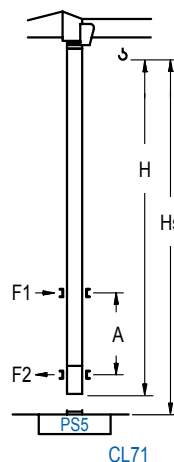
| | 1XA31 | 3XA51 | 5XA71 |
|---------|-------|-------|-------|
| A max | 29,1 | 34,6 | 45,9 |
| A min | 18,1 | 18,1 | 29,4 |
| B max | - | 22,0 | - |
| B min | - | 16,5 | - |
| C max | 35,3 | 35,3 | 35,3 |
| * H max | 64,4 | 86,4 | 103,2 |

| | ES31 | ES51 | ES71 |
|---------|------|------|-------|
| A max | 27,6 | 38,6 | 44,1 |
| A min | 16,6 | 22,1 | 27,6 |
| B max | - | 22,0 | - |
| B min | - | 16,5 | - |
| C max | 35,3 | 35,3 | 35,3 |
| * H max | 62,9 | 84,9 | 101,4 |

* Con S13; * With S13; * Avec S13; * Mit S13;
* Con S13; * C S13

GRÚA TREPADORA

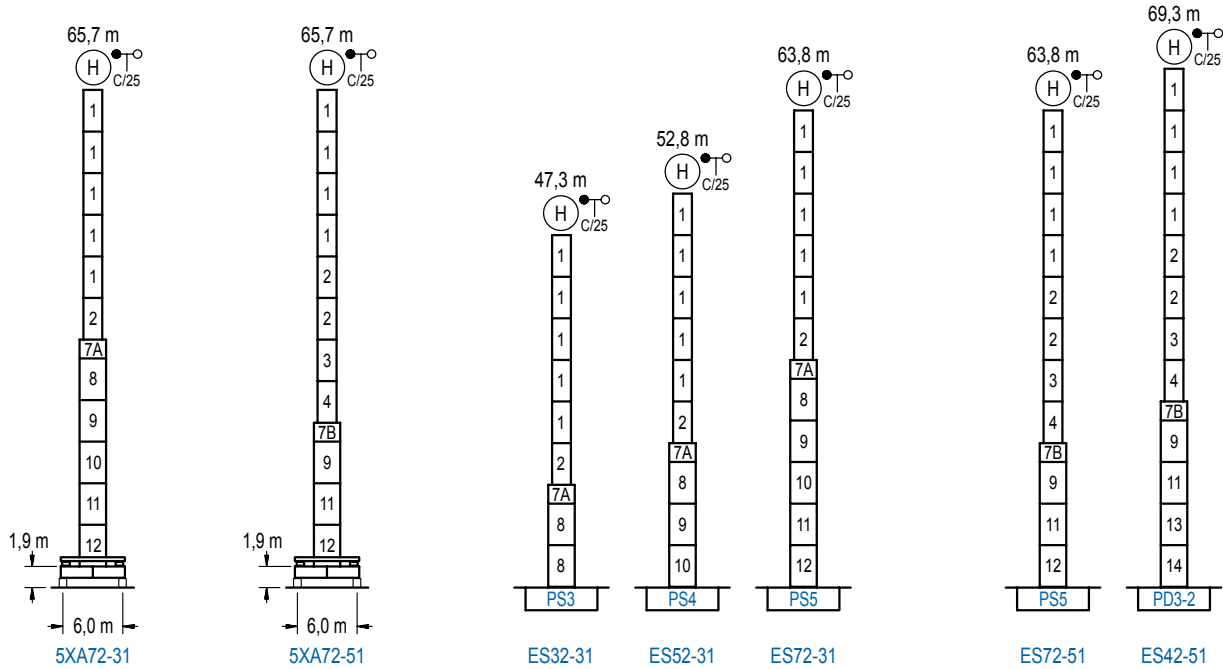
Internal climbing crane / Grue avec cage de télescage intérieure / Kran mit klettern im Gebäude / Gru in rampante in cavedio / Кран с самоподъемом



| H | Hs < 400 m | |
|---|------------|-----------|
| | A max (m) | A min (m) |
| 43,9 m S13J + 5x S12 + TS14 + TS15 + CLS15-1 | 16,8 | 11,0 |
| 38,4 m S13J + 4x S12 + TS14 + TS15 + CLS15-1 | 14,1 | 9,0 |
| 32,9 m S13J + 3x S12 + TS14 + TS15 + CLS15-1 | 11,4 | 7,0 |

| n° | Ref. | ∅ | h |
|----|---------|-----|-----|
| 1 | S12 | 1,6 | 5,5 |
| 3 | TS14 | 1,6 | 5,5 |
| 5 | TS15 | 1,6 | 5,5 |
| 23 | CLS15-1 | 1,6 | 3,1 |

Otras zonas de viento, alturas superiores, arriostramientos o trepado interno consultar / Other wind zones, additional hook heights, tie frames or internal climbing on request / Autres zones de vent, des hauteurs supplémentaires, entretoisements ou grues avec cage de télescage intérieure, sur demande / Andere Windzonen, weitere Hakenhöhen, Abspannungen zum Gebäude oder Klettern im Gebäude auf Anfrage / Per zone con velocità del vento particolari, altezze superiori, ancoraggi o rampante in cavedio, consultare il fabbricante / При других ветренных зонах, при большой высоте, привязках к зданию или наращивании крана внутри здания проконсультируйтесь с нами



| n° | Ref. | ∅ | h | n° | Ref. | ∅ | h | n° | Ref. | ∅ | h |
|------------------|------|-----|-----|------------------|------------|-----|-----|------------------|-------|-----|-----|
| 1 | S12 | 1,6 | 5,5 | 6 | S15 | 1,6 | 5,5 | 10 | S24 | 2,0 | 5,5 |
| 2 | S13 | 1,6 | 5,5 | 7A | TMS23/PMS3 | 2,0 | 1,0 | 11 | TS25 | 2,0 | 5,5 |
| 3 | TS14 | 1,6 | 5,5 | 7B | TMS23/PMS4 | 2,0 | 1,0 | 12 | S25 | 2,0 | 5,5 |
| 4 | S14 | 1,6 | 5,5 | 8 | S23 | 2,0 | 5,5 | 13 | TD23A | 2,0 | 5,5 |
| 5 | TS15 | 1,6 | 5,5 | 9 | TS24 | 2,0 | 5,5 | 14 | D23 | 2,0 | 5,5 |
| 1x S13 = 1x S13M | | | | 1x S15 = 1x S15M | | | | 1x S25 = 1x S25M | | | |

Otras zonas de viento o alturas superiores consultar / Other wind zones or additional hook heights on request / Autres zones de vent ou des hauteurs supplémentaires sur demande / Andere Windzonen oder weitere Hakenhöhen auf Anfrage / Per zone con velocità del vento particolari o altezze superiori consultare il fabbricante / При других ветренных зонах о при большой высоте проконсультируйтесь с нами



Construcciones Metálicas COMANSA S. A.

Tel.: (+34) 948 335 020 / Fax: (+34) 948 330 810 / E-mail: info@comansa.com
 Polígono Urbizkain, Crta. Aoiz Nº1 31620 Huarte (Navarra)- SPAIN